



STEP 1: Socioeconomic Context

SUGGESTED SOURCES OF INFORMATION:

- National statistics and global databases on socioeconomics and natural resource management at country and basin level (e.g.: World Bank Open Data, FAO Aquastat)
- National policy documents and strategic documents
- Relevant basin-level literature (e.g. transboundary diagnostic analyses)

STEP 2: Key Sectors, Key Actors

SUGGESTED TOOLS:

- [Factual Questionnaire \(diagnostic of issues\)](#)
[Download EN FR RU ES](#)
- Interest /Influence Grid (mapping of relevant stakeholders)

	LOW	INTEREST	HIGH
LOW INFLUENCE	Minimal Effort	Keep Informed	
HIGH INFLUENCE	Keep Satisfied	Key Stakeholders	

STEP 3: Analysis of Key Sectors

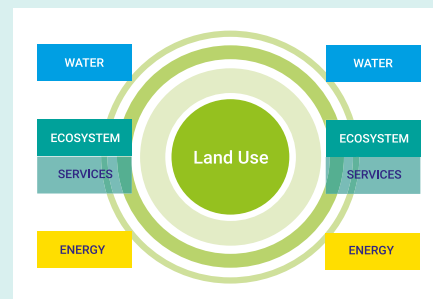
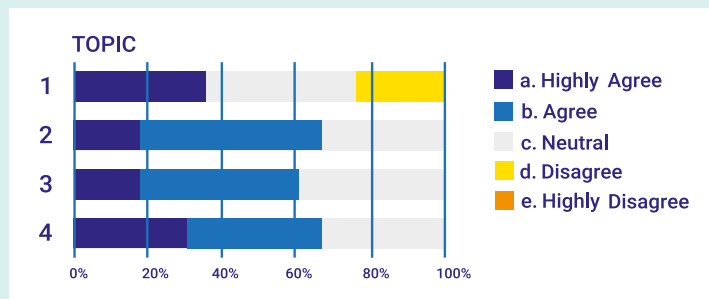
SUGGESTED TOOLS:

- Analytical tools (for e.g.: Integrated Assessment Modelling, water management/allocation, energy resource planning, land use)
- National and transboundary governance assessment tools

STEP 4: Intersectoral Issues

SUGGESTED TOOLS:

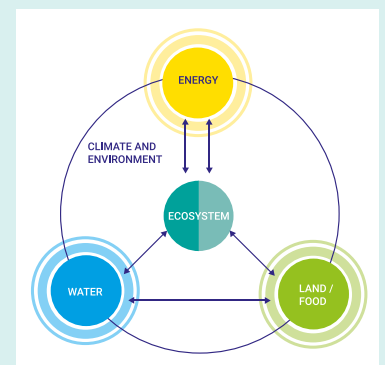
- [Opinion-based questionnaire \(agree / disagree with statements\)](#) Download EN FR RU ES
- Simplified diagrams for sectoral groups to facilitate brainstorming exercises



STEP 5: Nexus Dialogue

SUGGESTED TOOLS:

- Simplified diagrams to support the nexus dialogue



STEP 6: Solutions and Benefits

SUGGESTED TOOLS:

- Brainstorming sessions to identify possible solutions
- Experience sharing from other projects
- Cost and benefit analysis

For additional information, resources and to access tools / templates (in English, French, Russian and Spanish) as well as case studies visit:

- [Nexus methodology](#)
- [Water Energy Food Ecosystems Nexus](#)