



This project is co-funded by
the European Union



Federal Ministry
for Economic Cooperation
and Development



Nexus Dialogue Program

SADC Regional Nexus Dialogue Project Action Plan: lessons and good practices

3rd Executive Committee Meeting & Partners Meeting

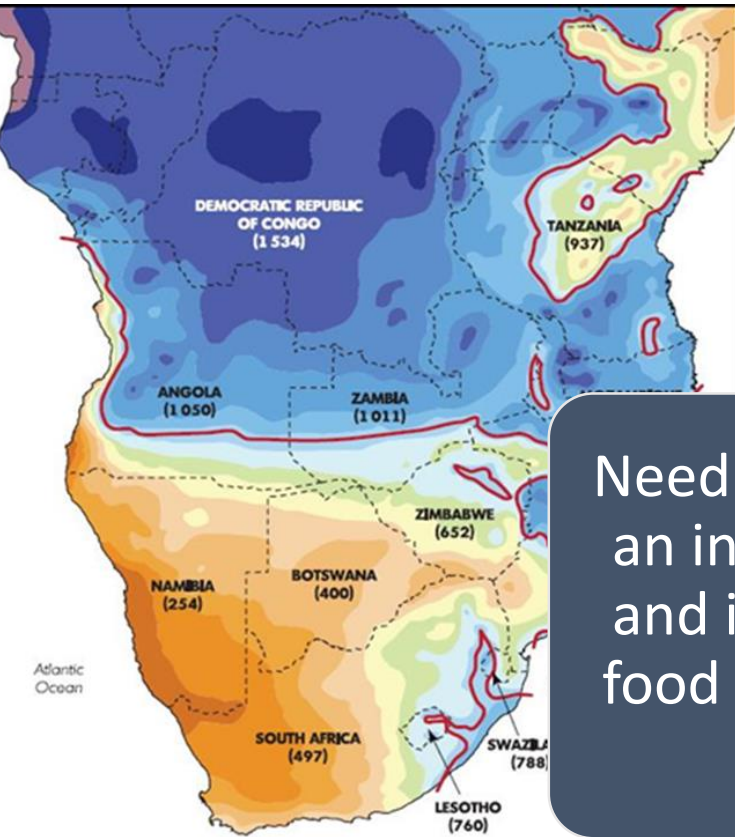
Nexus Dialogue Programme- Phase I

05-06 June 2019, Bonn, Germany



The SADC Context: the silo approach and the regional challenges

The SADC Sectoral approaches



Water, food , energy insecurity

Need to shift from a silo approach to an integrated approach of planning and investing for water, energy and food security... WEF Nexus approach

Trends-Challenges

Population growth

Urbanization

Climate change
(droughts and floods)

Resource degradation



- Stakeholder analysis
- Preliminary Regional level WEF analysis

- Regional Nexus Assessment
- National Nexus Assessment
- Discussion Papers: on WEF Nexus Governance and on Investment Projects
- Preliminary list of investment projects

- Draft Regional WEF Nexus Framework
- Draft WEF Nexus Project Screening/appraisal Tool
- Draft List of investment projects

- WEF Nexus Framework
- Action Plan for implementation

- Nexus Framework Document Adopted

SADC Joint Energy and Water Ministers - June 2018
SADC Agri. Ministers

SADC Council Decision (Aug 2018)

SADC Joint Energy and Water Ministers - May 2019
SADC Agri. Ministers



Jan – May 2017



Nov. 2017



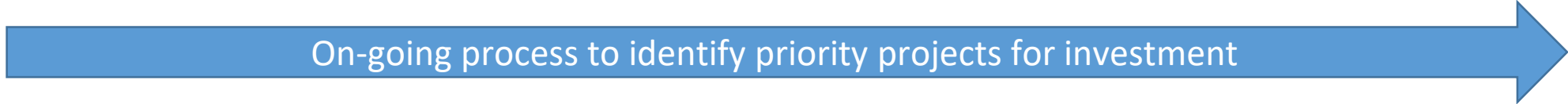
Nov 2018

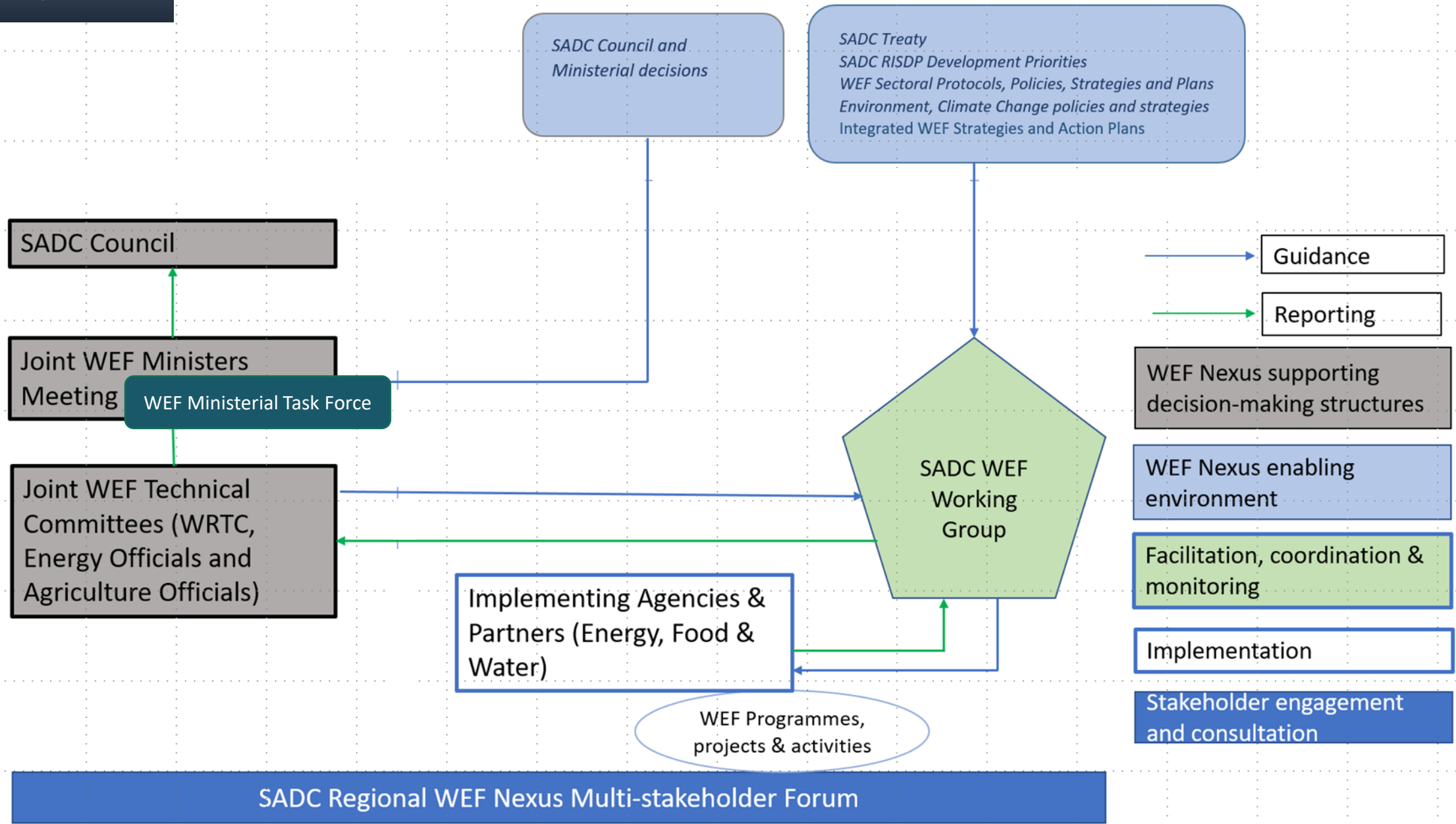


March 2019



August 2019





Criteria applied in identifying projects for high level WEF Nexus screening (15 Projects)

Criteria	Remarks
1. Project Objectives	<ul style="list-style-type: none"> Projects that have objectives of contributing to WEF security and/or WEL resource use efficiency. Eg. Multit-purpose projects or a single-purpose project with potential of meeting additional objective(s)
2. Relevance: regional & national priorities	<ul style="list-style-type: none"> Projects that are prioritized at regional level, and also prioritized or supported by countries (project countries) Eg Projects prioritized in SADC's RIDMP
3. Potential for WEF Nexus approach	<ul style="list-style-type: none"> Projects that have potential to explore additional opportunities beyond their main objective(s) Eg. An energy project may have potential for meeting food security and water objectives
4. Potential to attract funding	<ul style="list-style-type: none"> Projects that have potential to be bankable/attract investment after being enhanced through a WEF Nexus approach. Eg attractive for private sector investment
5. Climate resilience and sustainable development	<ul style="list-style-type: none"> Projects that have potential to contribute to building climate resilience of investment and ecosystems.
6. Regional/transboundary cooperation	<ul style="list-style-type: none"> Project that have potential to facilitate regional/transboundary cooperation towards meeting WEF security and resources use efficiency
7. Project co-benefits	<ul style="list-style-type: none"> Projects that have other co-benefits as Nexus approach opens new opportunities for society
8. Project Phases and Types	<ul style="list-style-type: none"> Projects that are at project preparation phases (initial studies, pre-feasibility study, feasibility study) and representation of types (scale and complexity)

Where is SADC in embracing the WEF Nexus approach?

Requirements for a WEF Nexus approach	Example of Nexus interventions in the SADC Region
1. Nexus Thinking	<ul style="list-style-type: none">▪ Defined WEF Nexus approach in the region-Conceptual Framework▪ Awareness raised: integrated plans, aligned policies, investment
2. Nexus Governance	<ul style="list-style-type: none">▪ Regional Nexus Framework to guide integrated planning and development▪ High level political support-SADC Council, WEF Ministers
3. Nexus Assessment	<ul style="list-style-type: none">▪ Regional/National Nexus Assessments▪ Tools for Nexus assessment, Guidelines
4. Nexus Decisions and Actions	<ul style="list-style-type: none">▪ Project Screening and Appraisal Tool to facilitate decision making▪ Developing a list of investment projects for WEF nexus screening and appraisal
5. Nexus Knowledge and Capacity	<ul style="list-style-type: none">▪ Developing capacities for NEXUS analysis to support decision making.▪ Facilitate knowledge sharing, and awareness raising
6. Nexus Platforms	<ul style="list-style-type: none">▪ SADC WEF Nexus multi-stakeholder Dialogue

Adopting a WEF Nexus approach is a long process that requires:

1. A High level political ownership:

- ✓ SADC defined the conceptual understanding and objectives of the Nexus approach.
- ✓ SADC took the WEF nexus discussions at higher levels—SADC Council of Ministers, SADC Ministers for Water, Energy and Agriculture
- ✓ SADC is establishing a regional framework for integrated planning/action in the WEF sectors

2. **A continuous multi-stakeholder/sectoral dialogue/engagement:** The SADC process built on the existing regional dialogues...from water to WEF,

3. **Build on existing structures** rather than creating new ones. SADC regional framework is building on the existing SADC structures

4. **Capacity for analysis** to support decisions. More awareness.. was lacking in the current phase of the project

5. A WEF Nexus approach to **support investment** (WEF security): **Demonstrating** the approach at investment project level. More capacity support for country level interventions

6. **WEF Nexus approach and other partners:** financing, implementing....blended financing arrangements

Initial Ideas for SADC Phase II

N	EU strategy for Nexus Phase II	Key issues/lessons/opportunities from Phase I SADC Nexus Project	SADC Nexus Phase II suggested components
1	High quality and high impact projects	<ul style="list-style-type: none"> ▪ WEF Nexus approach to improve quality of projects in the SADC region to attract investment/ financing 	<ul style="list-style-type: none"> ▪ Implementing WEF Nexus approach in prioritized 2/3 regional projects
2	Consider EU Blending Facilities and Development Financing Institutions (DFIs)-EU External Investment Plan	<ul style="list-style-type: none"> ▪ Screening projects that may attract different investors ▪ Screening projects that are prioritized at regional and national level 	<ul style="list-style-type: none"> ▪ Developing pipeline of projects for further consideration targeting other EU and non-EU financing sources
3	Sustainability of WEF nexus initiatives <ul style="list-style-type: none"> ▪ WEF Nexus value proposition and financing strategy ▪ Lessons from phase I 	<ul style="list-style-type: none"> ▪ SADC WEF Nexus Framework ▪ High level political support ▪ Nexus Project Screening Tool ▪ Nexus Dialogue Forum ▪ Sensitization going on with Member States...country perspective papers 	<ul style="list-style-type: none"> ▪ Strengthen the WEF Nexus coordination, facilitation and monitoring functions of the SADC Secretariat ▪ Sustain the regional WEF Nexus dialogue forums ▪ Provide support to Member States on WEF Nexus approach
4	Capacity building, Nexus resource platform	<ul style="list-style-type: none"> ▪ Need to work more on awareness/ sensitization, capacity building 	<ul style="list-style-type: none"> ▪ Capacity building and sensitization a key component targeting Member States and other partners
5		<ul style="list-style-type: none"> ▪ Regional approach in the SADC region 	<ul style="list-style-type: none"> ▪ Review RIDMP considering the WEF nexus approach ▪ Support development of new plans ▪ Support Basin investment planning



Thank you for your attention!